

## Construction Begins on Paoli Station Accessibility Improvements Project

February 28, 2017

Amtrak and partners host official groundbreaking ceremony

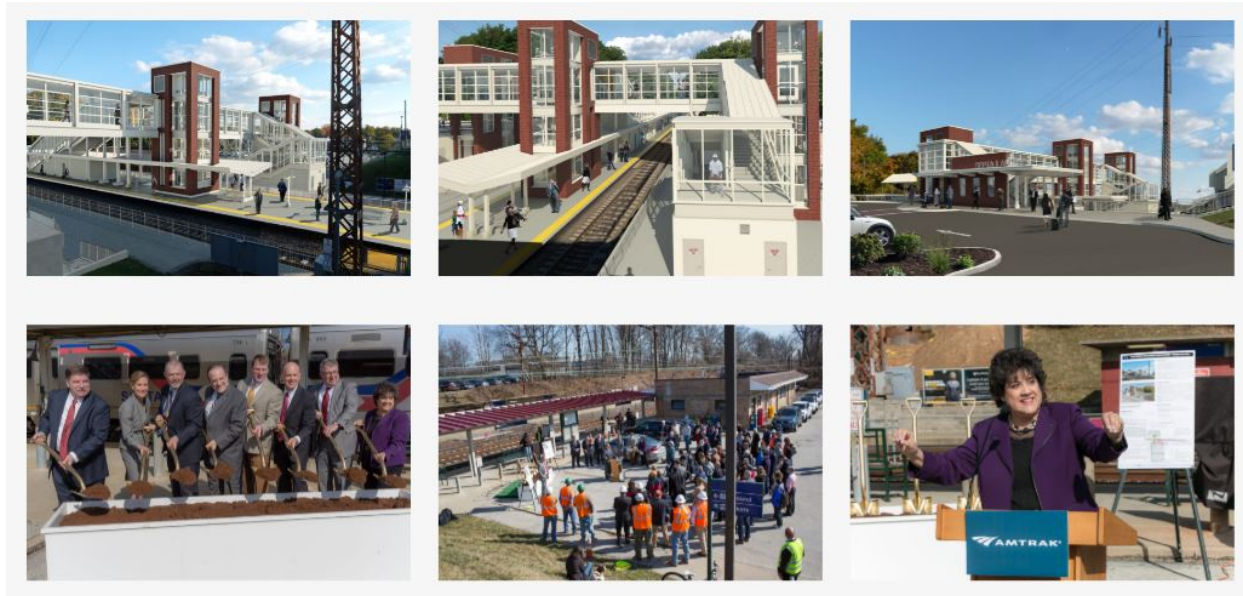


Image 4 of 6 (from left): Tom F. Mortiz, Amtrak Senior Director Business Development; Michelle Kichline, Chair of Chester County Commissioners; Toby Fauver, PennDOT Deputy Secretary for Multimodal Transportation; Pennsylvania Sen. Andy Dinniman (D-19); Trip Lukens, Tredyffrin Board of Supervisors Chairman; Jeffrey Kneuppel, SEPTA General Manager; Joe McHugh, Amtrak Vice President State Supported Services and Business Development; and Theresa Garcia Crews, U.S. Department of Transportation Region 3 Administrator.

PHILADELPHIA – Today federal, state and local officials joined together with SEPTA, Amtrak and their honored guests to officially break ground on the Paoli Station Accessibility Improvements Project, a \$36 million initiative to improve accessibility, safety and provide operational flexibility at the Paoli Train Station.

“Amtrak is advancing a robust program of station accessibility improvements across our network,” said Tom Moritz, Amtrak Senior Director of Business Development. “We are proud to partner with SEPTA, PennDOT, the Federal Transit Administration and the Tredyffrin Township community to help transform the Paoli Train Station into an intermodal facility that is accessible for all.”

“The Paoli Station Accessibility Improvements Project is the first phase in a long-term effort to bring much-needed improvements to this vital station,” said SEPTA General Manager Jeffrey D. Kneuppel. “This partnership between Amtrak, FTA, PennDOT and the surrounding community is a game-changer. This current phase of ADA improvements will make the station more accessible and safety will be enhanced through upgrades to the surface parking lot. Our riders and the community have been looking forward to the transformation of Paoli Station. I am thrilled to see work finally starting – and this is only the beginning.”

## **Construction Begins on Paoli Station Accessibility Improvements Project**

media.amtrak.com, February 28, 2017

*page 2*

Amtrak has contracted with Neshaminy Constructors Inc., of Feasterville, Pa., to advance a series of station improvements including a new center island, high level platform, new elevators and ramps, a pedestrian overpass, parking lot improvements, ADA improvements to the existing station building and upgrades in rail infrastructure to support other project components. During construction, there will be no impact to the number of available parking spaces or train operations.

Once complete, this project will set the stage for potential further construction of the proposed Paoli Intermodal Transportation Center, a new expansive transportation center envisioned to serve the growing needs of the traveling public and support the Paoli business district and future growth of the area.

“The improvements at Paoli station are in line with station improvements PennDOT has overseen at stations all along the 104-mile Keystone Corridor between Philadelphia and Harrisburg,” said Deputy Secretary for Multi Modal Toby Fauver. “Governor Wolf’s administration has continued the Commonwealth’s commitment to enhancing and building ridership along this vital passenger rail corridor, which contributes to the region’s economic vitality.”

“On behalf of the Tredyffrin Township Board of Supervisors and Staff, I would like to thank the Project Teams at Amtrak, SEPTA, & PennDOT for all of their diligence and hard work in making this project a reality,” said Tredyffrin Township Board Chairman Trip Lukens. “The Township, along with our partners at the Chester County Board of Commissioners, Chester County Planning Commission, Delaware Valley Regional Planning Commission, and members of the Paoli Task Force (both past and present), are thrilled to finally see this project come to life. This is the beginning of a renaissance for Paoli, the first of many future improvements near the station that will continue Tredyffrin Township’s important role in helping meet the transportation needs of our region.”

In fiscal year 2016, 201,572 Amtrak passengers and approximately 740,000 SEPTA passengers passed through the station. The current station facilities built in 1953 by the Pennsylvania Railroad, including the one-story brick station building, are not fully accessible and are in need of improvement. SEPTA and Amtrak have partnered to make modifications to the station and infrastructure at the station to bring into compliance with 2006 U.S. Department of Transportation Accessibility Standards.

*source: media.amtrak.com*